



---

# Why invest?

How drug treatment and recovery services  
work for individuals, communities and society

# What is drug addiction?

---



---

Drug addiction is a complex but treatable condition

---

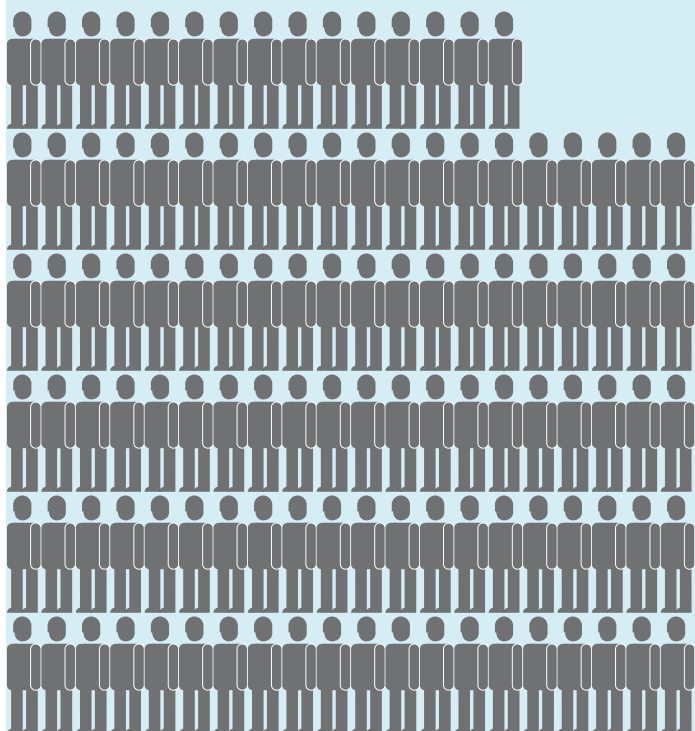
Addicts use drugs compulsively, damaging themselves and those around them

---

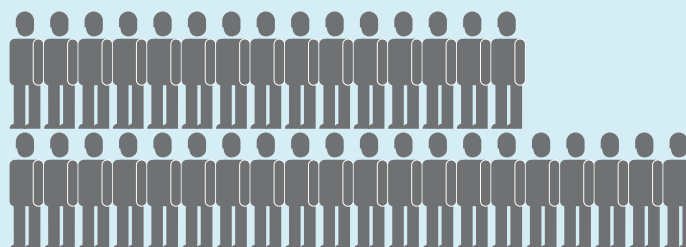
Drug addiction goes hand in hand with poor health, homelessness, family breakdown and offending

# Are drug addicts an NHS priority?

Smoking causes  
**115,000**  
deaths a year



Alcohol causes  
**35,000**  
deaths a year



Drugs cause  
**1,600**  
deaths a year



# Illegal drug use is common across society

1 in 3 adults  
have taken  
drugs at some  
point



About 1 in 10  
adults have used  
drugs recently

1 in 20  
adults  
use drugs  
frequently

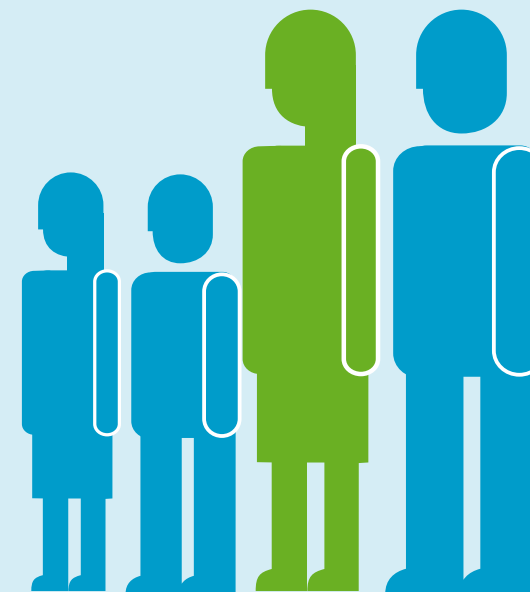
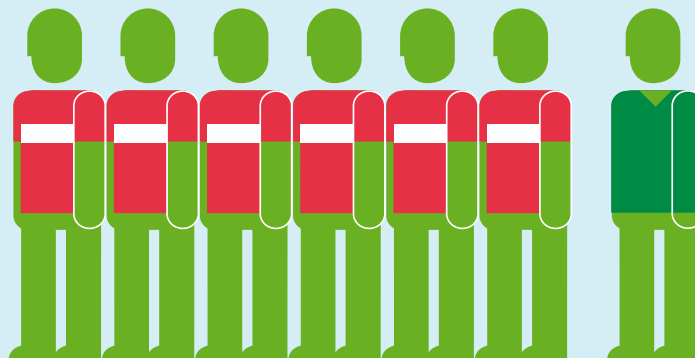


# Drug addiction is rare but concentrated



**306,000**  
heroin and  
crack users  
in England

The level of  
heroin and crack  
use in urban  
Middlesborough  
is **six times** that  
of rural Wiltshire



**1,200,000**  
affected by drug  
addiction in their  
families – mostly in  
poor communities

# The cost of drug addiction is huge

Every year it costs society

**£15,400,000,000**

## Impact on crime

- Burglary, robbery, fraud and shoplifting

## Impact on public health

- Drug-related deaths
- Blood-borne viruses (HIV, hepatitis C)

The annual cost of drug-related crime

**£13,900,000,000**

The lifetime crime & health bill for each drug injector

**£480,000**

## Impact on families and neighbourhoods

- Problem parents, troubled children
- Homelessness
- Welfare dependence
- Discarded needles

- Drug dealing
- Fear of crime

**£Unknown**

# So why spend on drug treatment?

## It makes communities safer

- reduced crime
- less drug litter and street prostitution
- troubled families stabilised

## It protects public health

- prevents drug-related deaths
- restricts blood-borne viruses (HIV, hepatitis C)
- reduces the burden on the NHS

## It helps drug users overcome addiction

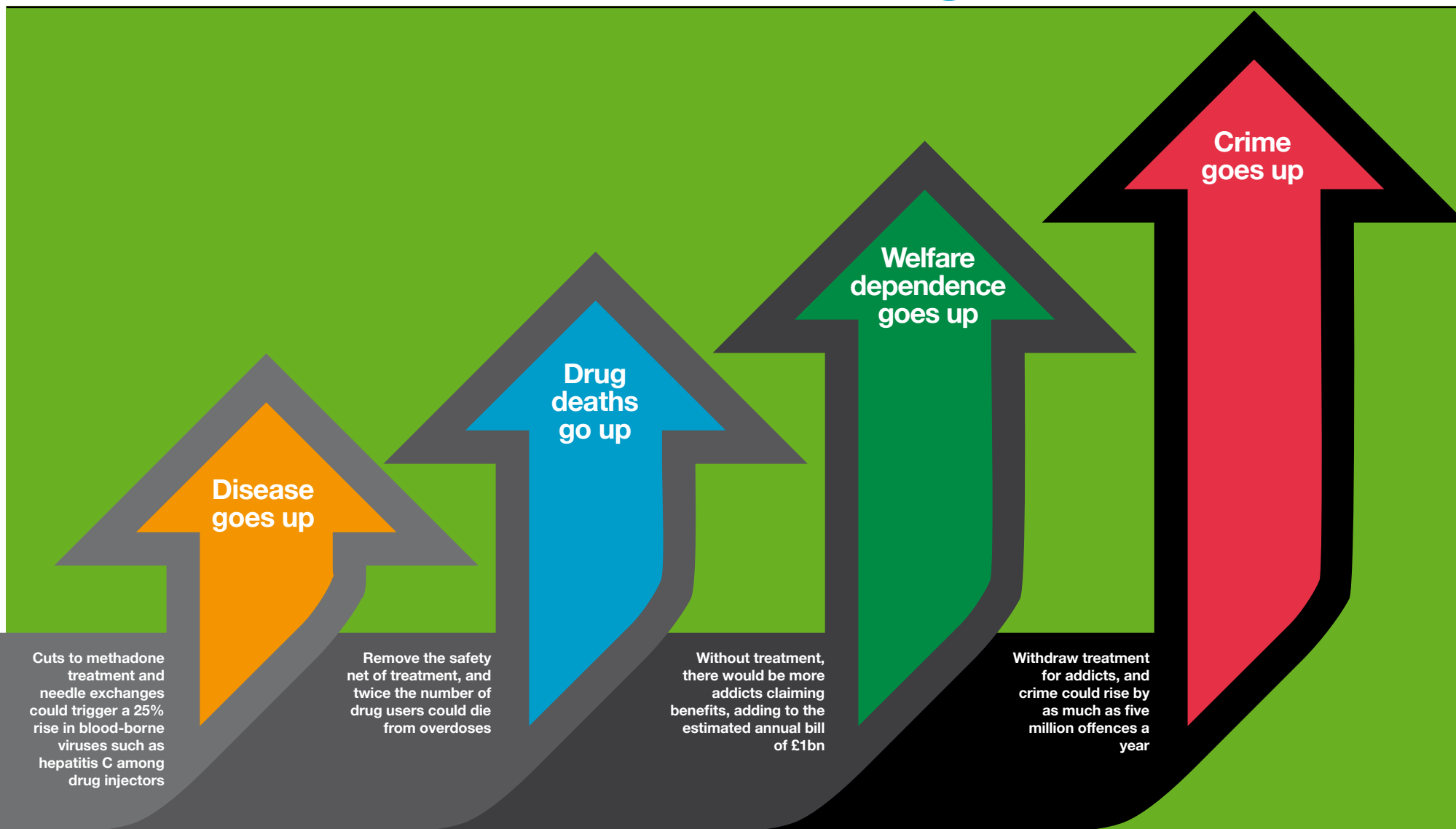
- 255,000 treated for drug addiction in England since 2006
- 72,000 (28%) left free of addiction
- 84,000 (33%) still being treated

## It has public support

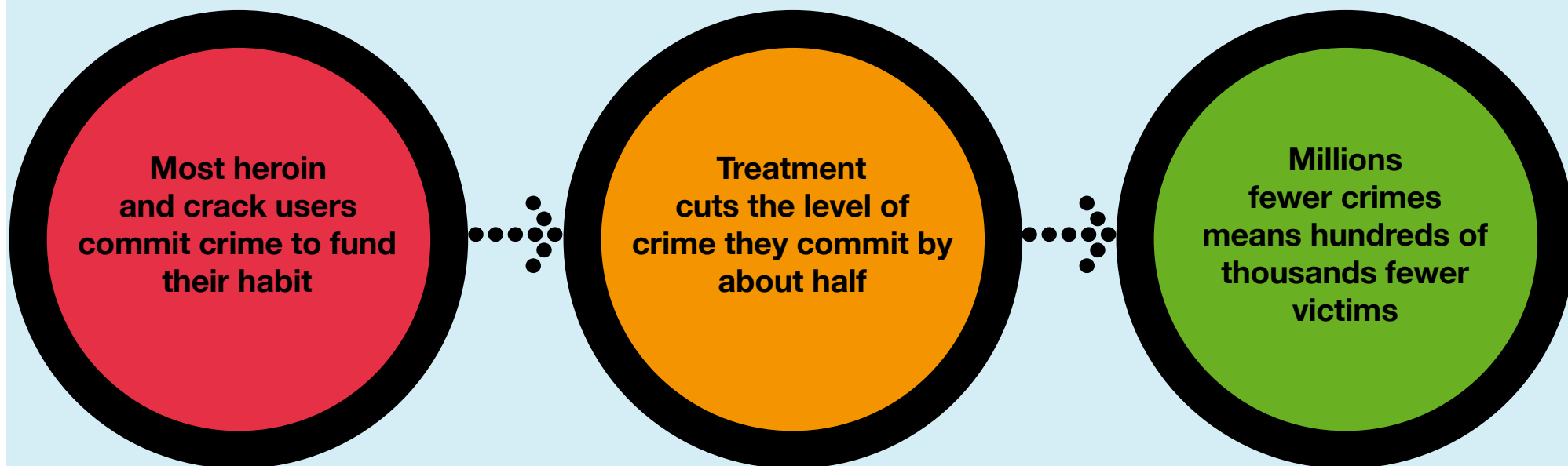
- 75% think drug treatment is a sensible use of public money
- 66% fear crime would increase without drug treatment
- 80% believe drug treatment makes society better and safer

Every  
£1 spent on  
drug treatment  
saves £2.50  
in costs to  
society

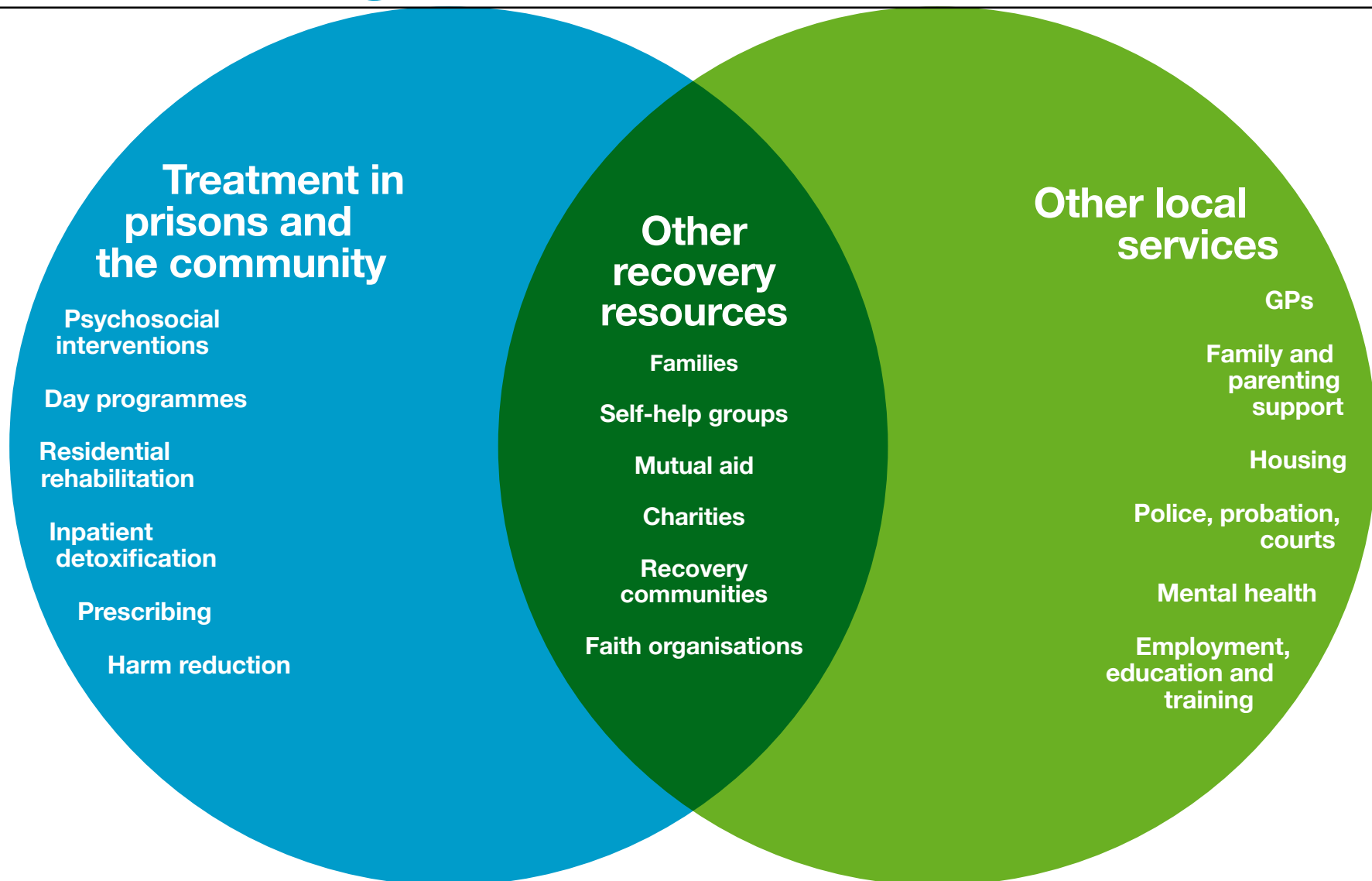
# What happens without drug treatment?



# Treatment cuts crime and improves safety



# How an integrated treatment system works



# A drug user's steps to recovery

## Starts treatment

Via needle exchange, test on arrest,  
self referral or GP

Assessment

Harm reduction advice

Professional and community  
support begins

2 3 4

Stays in treatment

Stops treatment

Sustains recovery

# A drug user's steps to recovery

1

Starts treatment

2

## Stays in treatment

Engaged, motivated and with recovery plan

'Talking therapies'  
(medication, if appropriate)

Drug use down, less crime and nuisance, health improves

Stable housing, family and peer support reinforce treatment gains

3 4

Stops treatment Sustains recovery

# A drug user's steps to recovery



# A drug user's steps to recovery

1 2 3

Starts treatment

Stays in treatment

Stops treatment

## Sustains recovery

Personal and family responsibility

Role model

Active citizen

Continuing community support

4

# What can you do to make a difference?

## Councillors

Invest in services that work with drug treatment to support recovery and improve outcomes

## Police

Promote drug treatment as a proven way to reduce crime and make communities safer

## Children & family services

Work with drug treatment services to identify and support vulnerable children and families

## Housing

Provide housing and support to help recovering users stay off drugs for good

## Employment

Link work programme, JCP, colleges and employers to help recovering drug users find jobs

## NHS

Identify drug problems early and treat all drug users' health needs in line with the NHS constitution

## Mental health

Work with drug treatment services to identify and support vulnerable people

Find out more at [www.nta.nhs.uk...](http://www.nta.nhs.uk...)

